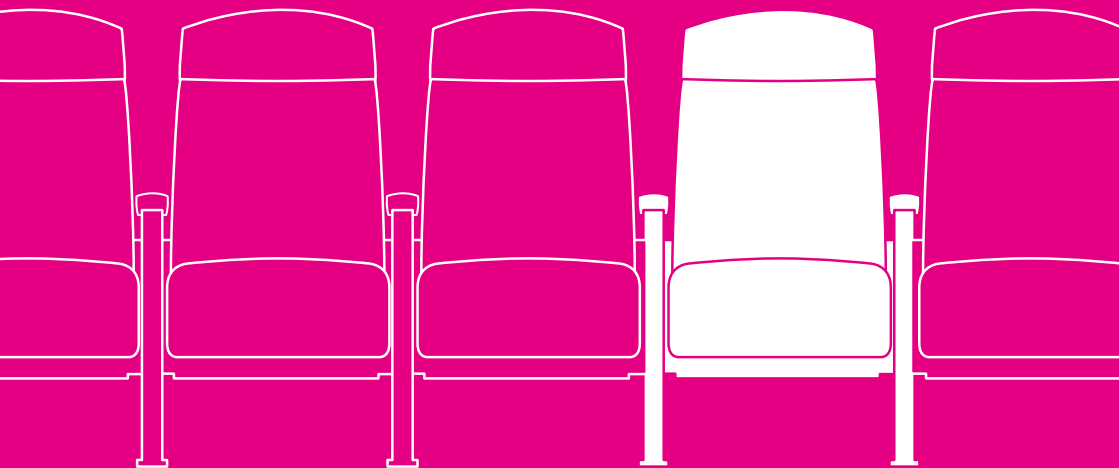


SHERMAN
CYMRU

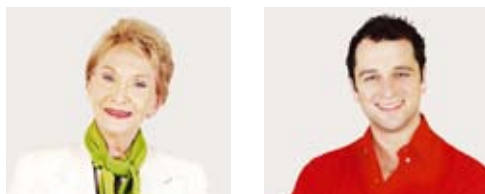


SIT WITH US EISTEDDWCH GYDA NI



A Message from our Patrons Neges Oddi Wrth Ein Noddwyr

Siân Phillips, Actress / Actores
Matthew Rhys, Actor



Sit with us in the new Sherman Cymru. We both have very fond memories of being audience members and performers at Sherman, and over the years the seats have played host to many people as they've been inspired, entertained, challenged and amused: children, as the lights go down, experiencing their first fantastical theatre performance; parents of youth theatre members watching, holding their breath as their children entertain a sold-out auditorium, and thousands of audience members enjoying anything from a brand new play to a classic text; from a dance piece, to a riotous comedian.

Good theatre should challenge, provoke and entertain, and you can help Sherman Cymru continue to do so for many more generations by adopting a seat.

Eisteddwch gyda ni yn y Sherman Cymru newydd. Mae gan y ddau ohonom atgofion hapus iawn o eistedd mewn cynulleidfya ac o berfformio yn y Sherman, a thros y blynyddoedd mae'r seddi wedi croesawu nifer fawr o bobl wrth iddynt gael eu hysbrydoli, eu diddanu, eu herio a'i difyrru. Wrth i'r goleuadau araf ddiffodd mae plant wedi profi eu perfformiad theatrig hudolus cyntaf; mae rhieni aelodau'r theatr ieuentid, â'u gwynt yn eu dwrn, wedi gwyllo eu plant yn diddanu awditoriwm orlawn; ac mae miloedd o bobl wedi mwynhau amrywiaeth o sioeau, o ddramau newydd sbon i destunau clasurol, o gyflwyniad dawns i gomediwr llawn hwyl a sbri.

Dylai theatr dda herio, pryfocio a diddanu. Trwy fabwysiadau sedd gallwch chi helpu Sherman Cymru i barhau â'r gwaith hwn am sawl cenhedlaeth eto.

In return for your donation,
you will receive:

- a named plaque on a seat for 10 years
- priority booking of productions, where possible, to the end of 2012
- an exclusive tour of the building before we officially open to the public

Yn gydnabyddiaeth am eich cyfraniad
byddwch yn derbyn:

- plac ar y sedd â'ch enw arno am 10 mlynedd
- blaenoriaeth pan fyddwch yn archebu tocynnau, pan fo hynny'n bosib, tan ddiwedd 2012
- taith arbennig o'r adeilad cyn i ni agor yn swyddogol

Box Office / Swyddfa Docynnau 029 2064 6900
www.shermancymru.co.uk

How to Adopt your Seat / Sut i Fabwysiadu Sedd

Please tick and enter amounts
in the appropriate box

Seat £240
(For more than 1 seat please contact
Suzanne Carter on 029 2064 6970)

Additional Donation Amount: £

Total Amount £

Ticiwch y blwch priodol gan nodi'r
swm os gwelwch yn dda

Sedd £240
(Am fwy nag un sedd cysylltwch â
Suzanne Carter ar 029 2064 6970)

Cyfraniad Ychwanegol o: £

Cyfanswm £

Please tick the appropriate prefix box and insert the name(s) for the plaque
Ticiwch y blwch priodol ac ysgrifennwch yr enw(au) fydd yn ymddangos ar y plac

This seat was adopted by
Mabwysiadwy y sedd hon gan

English
 Cymraeg

This seat was adopted in memory of
Mabwysiadwy y sedd hon er cof am

English
 Cymraeg

Payment Options / Opsiyau Talu

One off donation / Un cyfraniad

I enclose a cheque/cash for £ made payable to Sherman Cymru Capital Campaign
'Rwy'n amgáu arian parod/siec o £ yn daladwy i Ymgyrch Cyfalaf Sherman Cymru

For Credit/Debit Card payments, please contact Suzanne Carter, Appeals Manager on 02920 646970.
Ar gyfer taliadau Cerdyn Credyd/Debyd cysylltwch â Suzanne Carter, Rheolwr Apeliadau ar 029 2064 6970.

Paying in instalments / Talu bob yn dipyn

Direct Debit Options: £40 over 6 months / £40 dros 6 mis
Opsiyau Debyd Uniongyrchol: £20 over 12 months / £20 dros 12 mis
£10 over 24 months / £10 dros 24 mis

I wish to pay £ monthly for Months by Direct Debit

'Rwy'n dymuno talu £ bob mis am Mis drwy Ddebyd Uniongyrchol

Please complete the Direct Debit form overleaf
Cwblhewch y ffurflen Debyd Uniongyrchol trosodd os gwelwch yn dda



Supported by
The National Lottery
through the Arts Council of Wales

Cefnogwyd gan
Y Loteri Genedlaethol
trwy Gyngor Celfyddydau Cymru



Cyngor Celfyddydau Cymru
Arts Council of Wales



